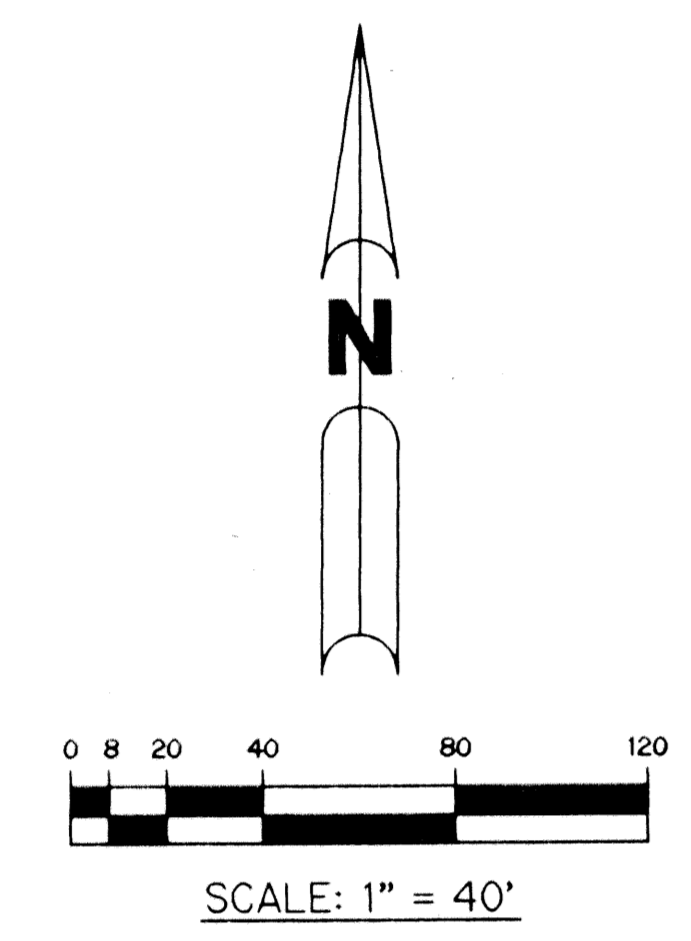


NYE PLANNED UNIT DEVELOPMENT RIVERMILL

A PARCEL OF LAND LYING IN
SECTION 2, TOWNSHIP 45 SOUTH, RANGE 42 EAST,
PALM BEACH COUNTY, FLORIDA.
SHEET 2 OF 7 FEBRUARY, 2000



UNPLATTED
(O.R.B. 2553, PG. 1880)

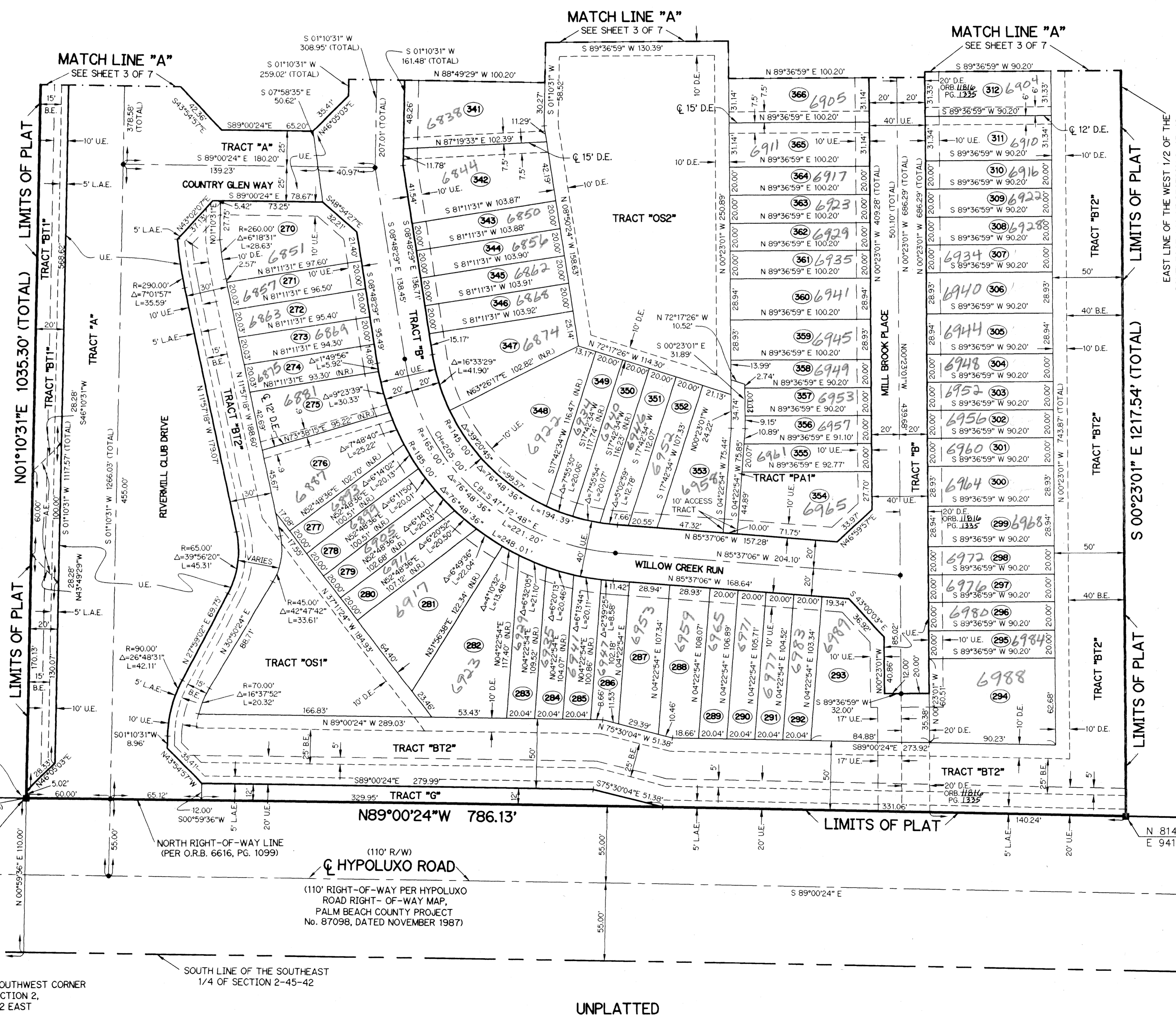
NOTE:
COORDINATES SHOWN ARE GRID COORDINATES
DATUM = NAD 83 (1990 ADJUSTMENT)
ZONE = FLORIDA EAST ZONE
LINEAR UNIT = U.S. SURVEY FEET
COORDINATE SYSTEM 1983 STATE PLANE
TRANSVERSE MERCATOR PROJECTION
ALL DISTANCES ARE GROUND
SCALE FACTOR = 1.000034481
NO ROTATION: PLAT BEARING = GRID BEARING

PALM BEACH COUNTY
BRASS DISK "INDIAN PINES"
N 820812.8920
E 937364.3180

POINT OF BEGINNING

PALM BEACH COUNTY
BRASS DISK "E-3 HYPO"
N 814633.4500
E 940689.2210

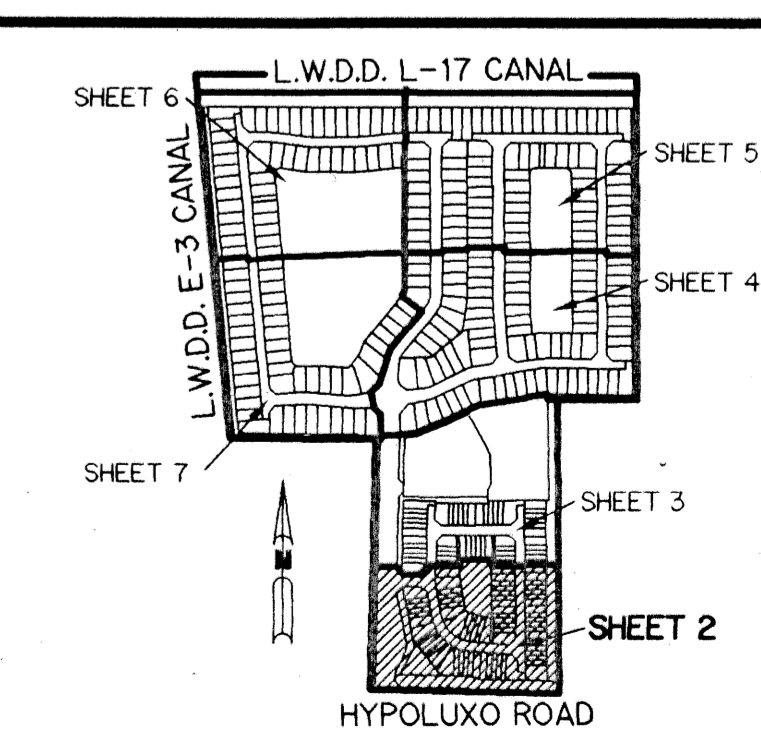
POINT OF COMMENCEMENT - SOUTHWEST CORNER
OF THE SOUTHEAST 1/4 OF SECTION 2,
TOWNSHIP 45 SOUTH, RANGE 42 EAST



- LEGEND:**
- - SET PERMANENT REFERENCE MONUMENT, LB-6674
 - - PERMANENT CONTROL POINT, PSM #4190
 - △ - DELTA ANGLE
 - BE - BUFFER EASEMENT
 - CB - CENTERLINE
 - CH - CHORD BEARING
 - CL - CHORD LENGTH
 - DB - DEED BOOK
 - DE - DRAINAGE EASEMENT
 - LE - ARC LENGTH
 - AE - ACCESS EASEMENT
 - L.A.E. - LIMITED ACCESS EASEMENT
 - L.M.A.E. - LAKE MAINTENANCE ACCESS EASEMENT
 - L.M.E. - LAKE MAINTENANCE EASEMENT
 - L.W.D. - LAKE WORTH DRAINAGE DISTRICT
 - NR - NOT RADIAL
 - N.T.S. - NOT TO SCALE
 - O.E. - OVERHANG EASEMENT
 - O.R.B. - OFFICIAL RECORD BOOK
 - P.B. - FLAT BOOK
 - P.S. - PAGES
 - P.S.M. - PROFESSIONAL SURVEYOR AND MAPPER
 - R. - RADIUS
 - R/W - RIGHT-OF-WAY
 - S.T. - SURVEY TIE
 - UE - UTILITY EASEMENT
 - N.T. - NON-TANGENT
 - RF. - RADIAL TO FRONT LOT LINE
 - RR. - RADIAL TO REAR LOT LINE
 - P.A.E. - PEDESTRIAN ACCESS EASEMENT
- N 814602.8657
E 785753.1680 - DENOTES STATE PLANE COORDINATES

UNPLATTED

THIS INSTRUMENT PREPARED BY
WILBUR F. DIVINE, P.S.M. 4190, STATE OF FLORIDA
LAWSON, NOBLE AND WEBB, INC., LB-6674
ENGINEERS PLANNERS SURVEYORS
420 COLUMBIA DRIVE, SUITE 110
WEST PALM BEACH, FLORIDA



KEY MAP
N.T.S.

Rivermill II
88
158
PUD/TDC
33463
34
434
NYE